

RV Single Deflection Grille



ASLI RV series is a set of grille made up of 1 set of individually adjustable horizontal air foil blades.

Materials

RV-A

Frame: Extruded Aluminium A6063
Blade: Extruded Aluminium A6063

RV-T

Frame: 1.0mm Galvanized steel
Blade: Galvanized steel

Surface Finish

Baked white powder coated as standard.
Others available upon request.

Size

All sizes are available upon request

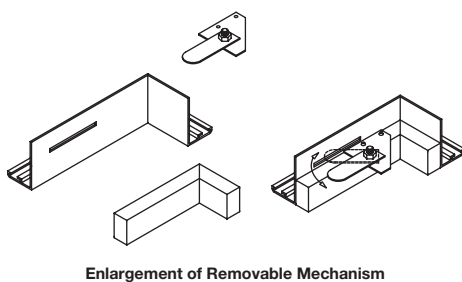
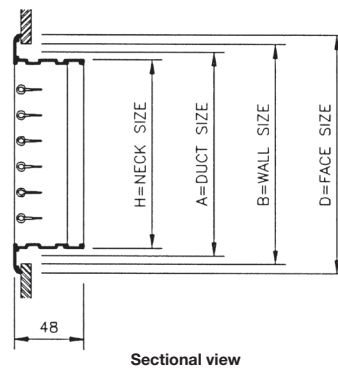
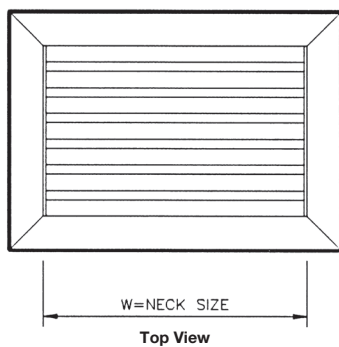
Features

- The grille will come in more sections for blade length that is more than 500mm.
- Approximately 83% free area when blades are fully open.

Accessories

G1 Opposed blade damper.

RV Physical Dimension *Unit : mm*



RV Single Deflection Grille

Model	A Duct Size	B Wall Size	D Face Size
RV-T	W+10 H+10	W+20 H+20	W+60 H+60
RV-A			W+54 H+54

RV Performance Data

Neck Size Area (m ²)	Neck Size (mm x mm)	Neck Vel. (m/s)	2.0	2.5	3.0	3.5	4.0	5.0	6.0
		Vel. Press(mmAq)	0.25	0.4	0.55	0.75	1.0	1.55	2.2
		Neg. SP(mmAq)	2.8	1.2	1.7	2.2	3.0	4.6	6.7
0.025	250 x 100	CMH	180	225	270	315	360	450	540
	200 x 125	NC	-	-	11	17	23	30	39
0.03	300 x 100	CMH	216	270	324	378	432	540	648
	200 x 150	NC	-	-	12	19	25	31	41
0.04	400 x 100	CMH	252	315	378	441	504	630	756
	250 x 150	NC	-	-	14	21	26	34	43
0.045	350 x 125	CMH	288	360	432	504	576	720	864
	300 x 150	NC	-	-	16	23	28	36	45
0.05	350 x 150	CMH	360	450	540	630	720	900	1080
	250 x 200	NC	-	-	16	23	28	36	45
0.06	600 x 100	CMH	432	540	648	756	864	1080	1296
	400 x 150	NC	-	11	18	25	30	37	46
0.075	600 x 125 / 350 x 200	CMH	540	675	810	945	1080	1350	1620
	500 x 150 / 300 x 250	NC	-	11	18	25	30	37	46
0.09	700 x 125 / 400 x 200	CMH	648	810	972	1134	1296	1620	1944
	550 x 150 / 350 x 250	NC	-	13	21	26	32	39	47
0.1	750 x 125 / 450 x 200	CMH	720	900	1080	1260	1440	1800	2160
	660 x 150 / 400 x 250	NC	-	14	21	28	33	40	48
0.12	900 x 125 / 450 x 250	CMH	864	1080	1296	1512	1728	2160	2592
	750 x 150 / 350 x 300	NC	-	15	23	29	34	42	49
0.128	850 x 150 / 500 x 250	CMH	922	1152	1382	1612	1843	2304	2765
	600 x 200 / 400 x 300	NC	-	16	23	29	34	42	49
0.135	1200 x 125 / 450 x 300	CMH	972	1215	1458	1700	1944	2430	2916
	900 x 150 / 400 x 350	NC	-	16	23	29	34	42	50
0.18	900 x 200 / 600 x 300	CMH	1296	1620	1944	2268	2592	3240	3888
	750 x 250 / 450 x 400	NC	-	17	24	30	35	43	51
0.27	750 x 350 / 600 x 450	CMH	1944	2430	2915	3402	3888	4860	5832
	660 x 400 / 550 x 500	NC	-	17	25	32	37	45	53
0.36	1200 x 300 / 750 x 450	CMH	2592	3240	3888	4536	5184	6480	7776
	900 x 400 / 600 x 600	NC	12	19	26	33	39	47	55

- NC value is based on a room absorption of 10 dB, re 10⁻¹² watts.
- Dash (-) in space indicates NC value less than 10.

RV Order Code

Model	Materials	Accessories	W	H
RV	A	G1	N350	150

Example : RV - A + G1 - N350 x 150