

NAFA 8Nm 2-Point On-Off Control Spring Return Actuator



ASLI is proud to offer the 08 Nm spring return damper actuator of the NAFA...08(S) Nm Series designed specifically applications into the HVAC market, or light Industrial market and telecommunication module. ASLI high quality spring return damper actuators have been designed for use with air damper, butterfly valve, characterized ball valve and globe valve with the use of special adapter.

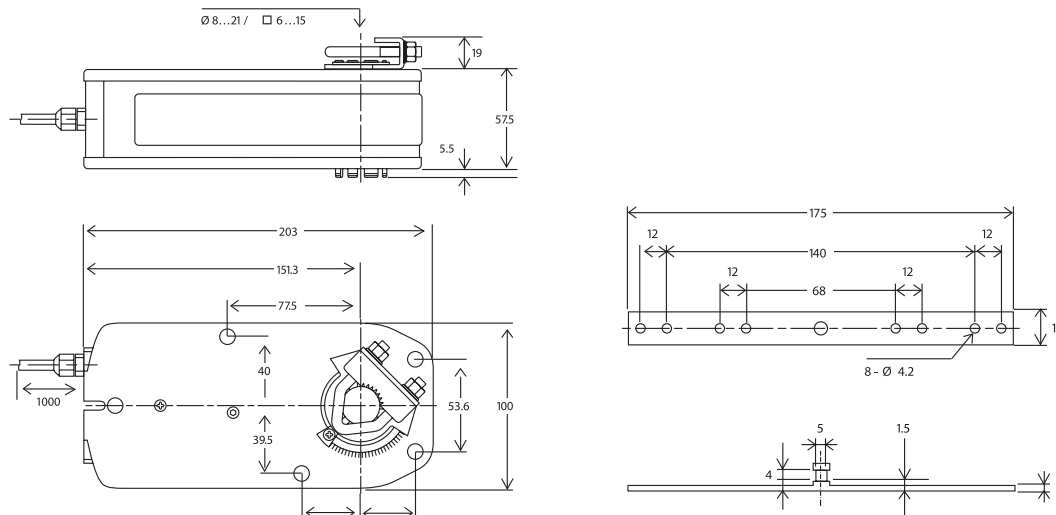
Features

- For air control dampers up to approx.1.0 m².
- Torque 8 Nm.
- Nominal voltage AC/DC 24 V /AC 230 V.
- Control 2 Point On/Off.
- Universal adapter for easy direct mounting.
- Shaft dimension Ø10...20mm / 7...14mm square.
- 40 mm minimum shaft length.
- Anti-rotation bracket provided for stability.
- Manual over ride by crank handle when required.
- Adjustable angle of rotation, mechanical end stops.
- 1 fixed and 1 adjustable SPDT auxiliary switches when requested.
- Actuators available with 1m cable connection.

NAFA 8Nm Model Selection Table

Torque	Running Time	Power Supply	Auxiliary Switches	Model/Type
8 Nm	70 sec	AC/DC 24 V	No	NAFA 1-08
	Spring back <25 sec		2 x SPDT	NAFA 1-08S
8 Nm	70 sec	AC 230 V ± 10%	No	NAFA 2-08
	Spring back <25 sec		2 x SPDT	NAFA 2-08S

NAFA 8Nm Actuator Dimensions *Unit : mm*

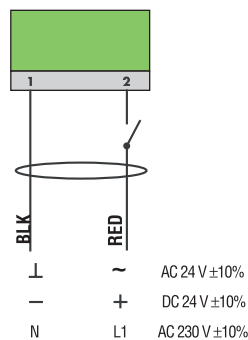


NAFA 8Nm 2-Point On-Off Control Spring Return Actuator

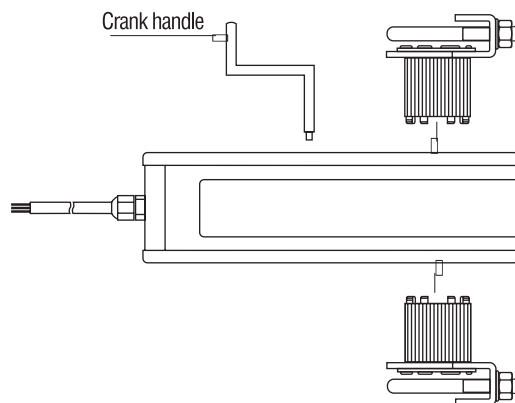
NAFA 8Nm Technical Specification

	NAFA 1-08(S1)	NAFA 2-08(S1)
Torque	8 Nm	8 Nm
Damper size	1.0m ²	1.0m ²
Power supply	AC/DC 24 V	AC 230 V
Frequency	50...60 Hz	50...60 Hz
POWER CONSUMPTION		
- Operating	7.0 W	8.0 W
- At the end stops	2.0 W	5.5 W
For wire sizing	8.0 VA	8.0 VA
Auxiliary switch rating	3 (1.5) A / AC 230 V	3 (1.5) A / AC 230 V
Protection class	II	II
Control signals	2 point on/off	2 point on/off
Angle of rotation	-5...+90° (mechanical)	-5...+90° (mechanical)
Angle limiting	Mechanical end stops	Mechanical end stops
Weight approx.	2.2 Kg	2.2 Kg
Life cycle	60,000 rotation	60,000 rotation
Sound level	Max. 45 dB(A)	Max. 45 dB(A)
IP protection	IP54	IP54
Ambient temperature	-20°... +50°C / IEC 721-3-3	-20°... +50°C / IEC 721-3-3
Inventory temperature	-30°... +60°C / IEC 721-3-2	-30°... +60°C / IEC 721-3-2
Ambient humidity	5...95% RH non condensing	5...95% RH non condensing
Maintenance	maintenance free	maintenance free
Impact	Typ 1 / EN 60730-1	Typ 1 / EN 60730-1
Standardize	89 / 336 / CE	89 / 336 / CE

NAFA 8Nm Wiring Diagram



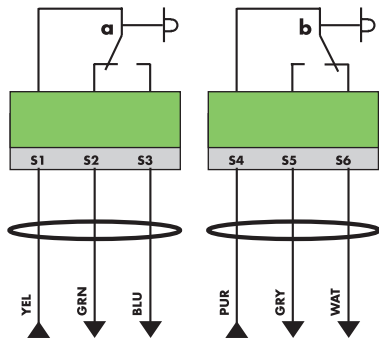
Changing Direction of Rotation



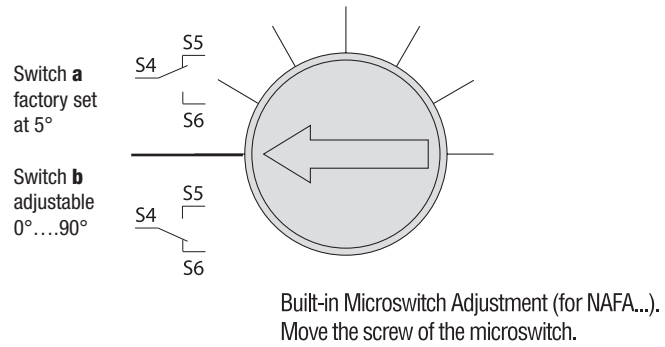
⚠ 24VAC/DC: Connect via safety isolating transformer.
 230 VAC: To isolate from the main power supply, the system must incorporate a device which disconnects the phase conductors (with at least a 3 mm contact gap).

NAFA 8Nm 2-Point On-Off Control Spring Return Actuator

NAFA 8Nm Wiring Diagram Auxiliary Switches (S)



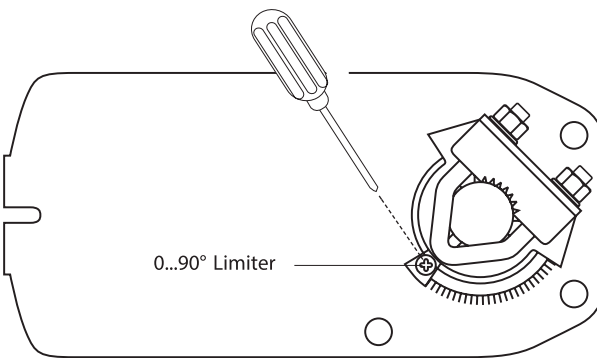
Auxiliary Switches adjustment NAFA...08 (S)



Angle of Rotation Limiting

Mechanical Limited Adjustment

1. Loosen screw of the mechanical limited.
2. Move the limited to the appropriate position.
3. Tighten on the screw.



NAFA 8Nm Installation/Mounting

