

SLR-C Round Silencer

■ Description

ASLI Round Silencer (SLR-C) is designed to attenuate noise in circular ducting. The acoustical material, fiberglass reduces the noise transmitted through the ductwork. Perforated metal sheet protects the fiberglass from being eroded by air flow.

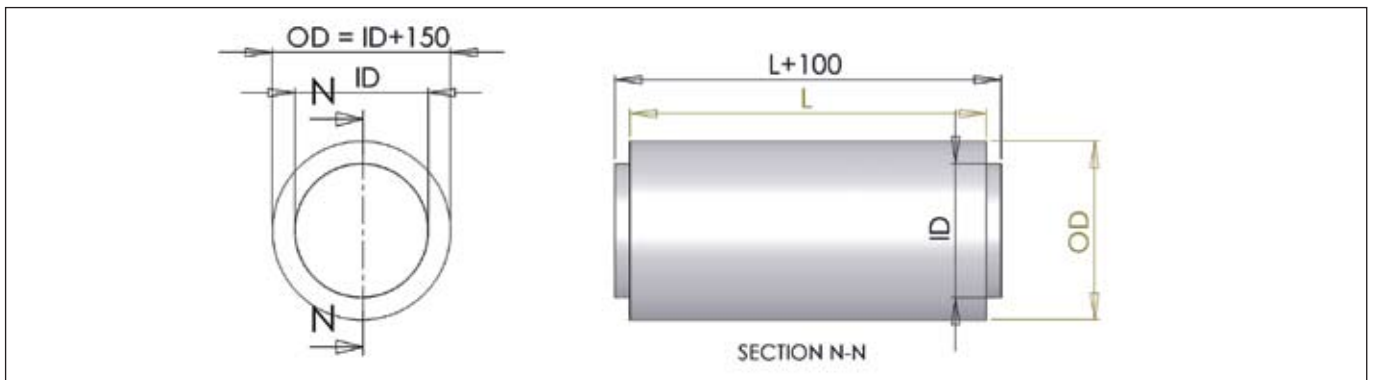
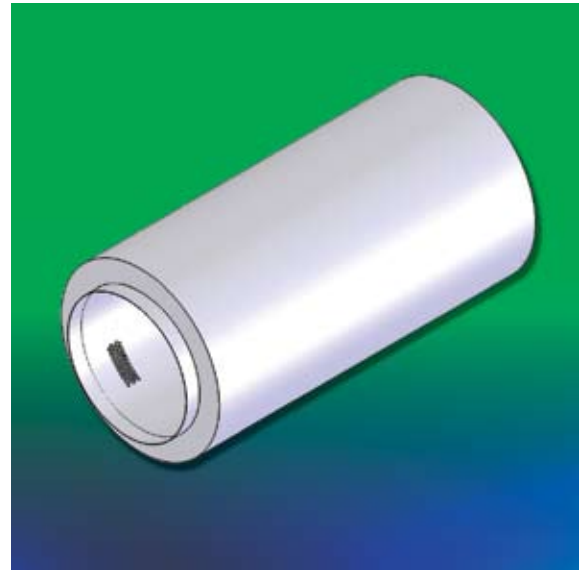
■ Material

- Casing: 1.0mm galvanized steel.
- Baffle: 0.7mm perforated galvanized.
- Acoustical material: Fiberglass.

■ Surface Finish

- Mill Galvanized.

■ SLR-C Physical Dimension Unit:mm



■ Insertion Loss

ID (mm)	OD (mm)	Length, L (mm)	Frequency (Hz)	63	125	250	500	1000	2000	4000	8000
			Face Velocity (m/s)	Insertion Loss (dB)							
150	300	525	-25	2	2	2	4	3	2	2	1
			0	3	2	3	5	4	4	3	3
			25	2	2	2	4	2	2	1	1
300	450	1050	-25	1	2	4	6	3	3	2	2
			0	2	4	5	8	7	8	5	3
			25	1	2	4	3	3	3	2	2
450	600	1575	-25	2	3	7	8	8	10	8	8
			0	2	4	8	12	11	8	6	6
			25	2	3	7	8	8	10	8	8
600	750	2100	-25	2	4	7	15	8	6	4	3
			0	4	5	8	17	12	7	6	5
			25	2	4	7	15	8	6	4	3
900	1050	3150	-25	1	3	7	15	10	6	2	2
			0	3	5	10	20	7	7	7	8
			25	1	3	7	15	10	6	2	2
1200	1350	4200	-25	1	1	5	3	5	5	1	1
			0	3	4	12	19	5	5	5	5
			25	1	1	5	3	5	5	1	1

- Positive face velocity indicates forward flow while negative face velocity indicates reverse flow.
- Forward flow occurs when the air flow is in the same direction as the noise transmitted.
- Reverse flow occurs when the air flow is opposite the noise transmitted direction.
- Zero face velocity indicates static insertion loss; the rest are dynamic insertion losses.

SLR-C Round Silencer

■ Airflow Generated Sound Power

SLR-C does not have internal components that would cause generated noise. The results of laboratory testing indicate indiscernible differences between the noise generated by the silencer and the noise generated by the connecting duct.

■ Pressure Drop

ID (mm)	Face Velocity (m/s)				
	5	10	15	20	25
Dynamic Pressure Drop (Pa)					
150	0	3	5	8	13
300	0	3	3	5	10
450	0	0	3	5	8
600	0	0	3	5	8
900	0	0	3	3	5
1200	0	0	3	3	5

■ SLR-C Order Code

Model	Inlet Diameter, ID (mm)	Length, L (mm)
SLR-C	ID300	L1050

Example: SLR-C – ID300XL1050mm