

## FDC-T Curtain Type Fire Damper

Tested and conform to 1.5 hours UL 555

### Description

FDC-T is a curtain type fire damper, which shut off the fire damper when the fusible link fuses off at 165°F (74°C). No tensioned spring is required, as the gravitational force will pull down the curtain-type blades when the fusible link fuses off.

### Materials

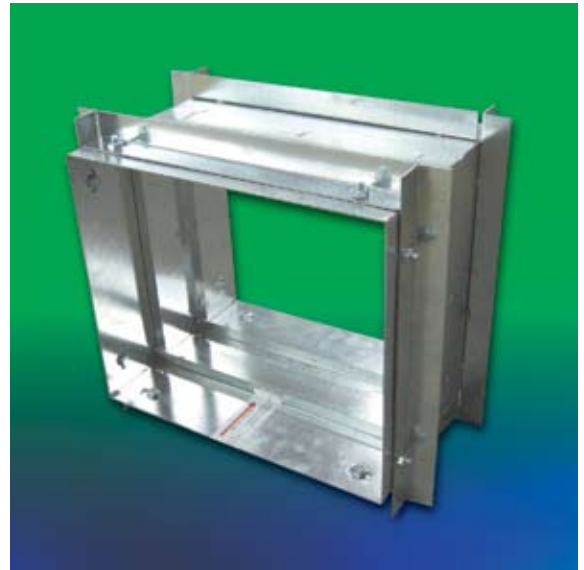
- Frame: 1.5mm galvanized steel.
- Blade: 0.8mm galvanized steel. Curtain typed.

### Features

- Curtain type blades. No tensioned spring is required.
- FDC-T frame and blades are in solid structure. No welding are applied on the joints.
- FDC-T has to be installed vertically to allow the curtain-type blades to fall down automatically.
- FDC-T is constructed to 1.5-hour UL555 rated and 2-hour BS476: part20 for use in static system.
- FDC-T has been tested and conformed to 1.5 hours UL555.

### Connection Method

- Angle bar (A) as standard.

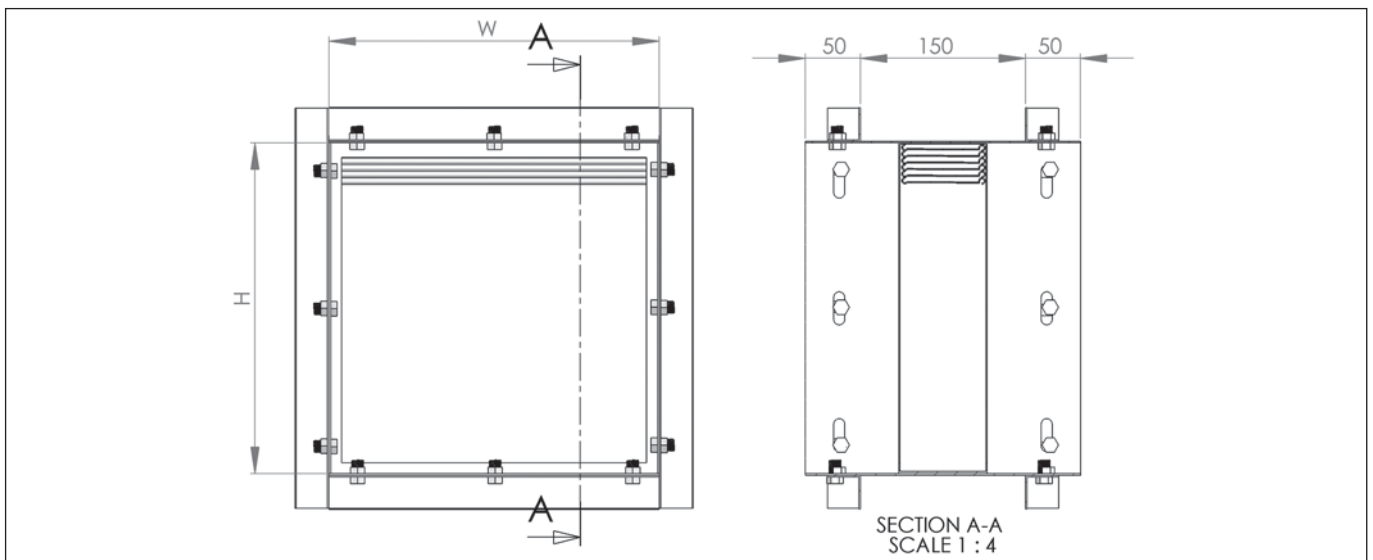


Open



Close

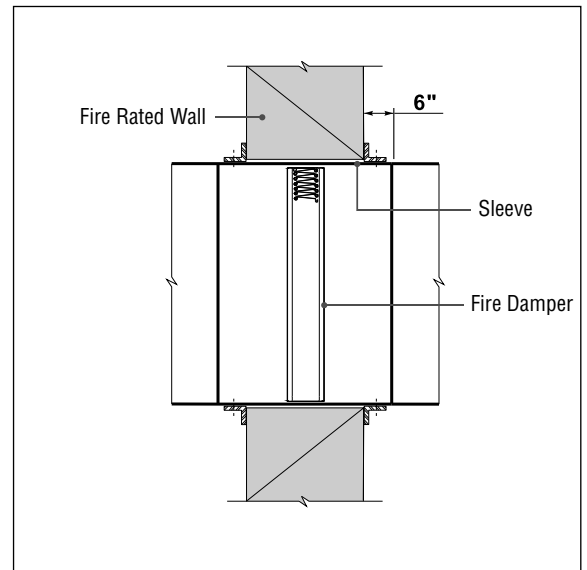
### FDC-T Construction Illustrations



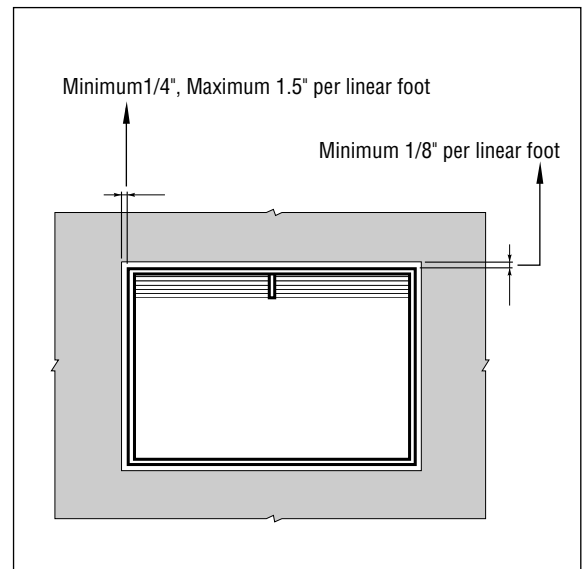
## FDC-T Curtain Type Fire Damper

### ■ Typical Curtain Type Fire Damper Installation

FDC-T sits in the sleeve in between the fire rated wall. The sleeve has to be extended both ways with maximum 6 inches from the wall. If there is an access door, the extended sleeve can not be more than 16 inches.



The opening of the wall must be bigger than the size of the fire damper and sleeve for elongation during high temperature. The minimum gap on top and at the bottom of fire damper is 1/8 inch per foot and minimum 1/4 inch per foot (maximum 1.5 inch per foot) at the side of the fire damper.



### ■ FDC-T Order Code Unit:mm

Model	Neck Size (W X H X D)	Connection Method (Left)	Connection Method (Right)
FDC-T	1000mm X 1000mm X 150mm	Angle bar (A)	Angle bar (A)

**Example:** FDC-T-1000mmX1000mmX150mm-AA