

CF Jet Diffuser

Description

ASLI CF Jet Diffusers are designed for application where a flooding or dumping of conditioned air is required without the need to control the direction of airflow. CF jet diffusers are suitable to be installed on exposed ductwork or surface mounted in stadium, factory, theatre and etc.

Materials

- Frame: CF-A, 1.0mm thickness aluminum sheet roll formed.

Surface Finish

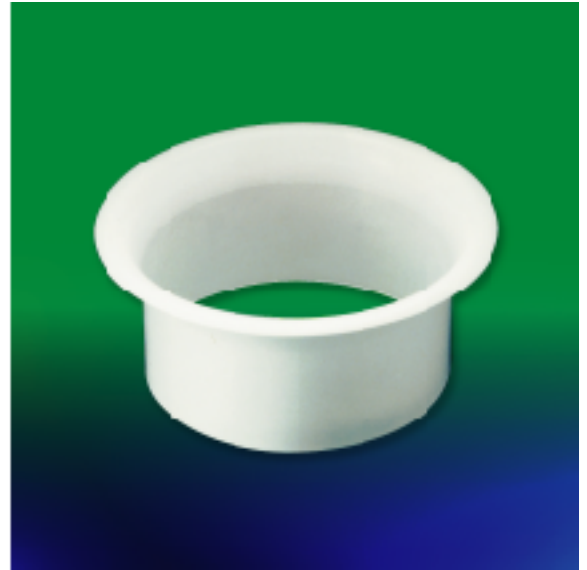
- Baked white powder coat as standard.

Features

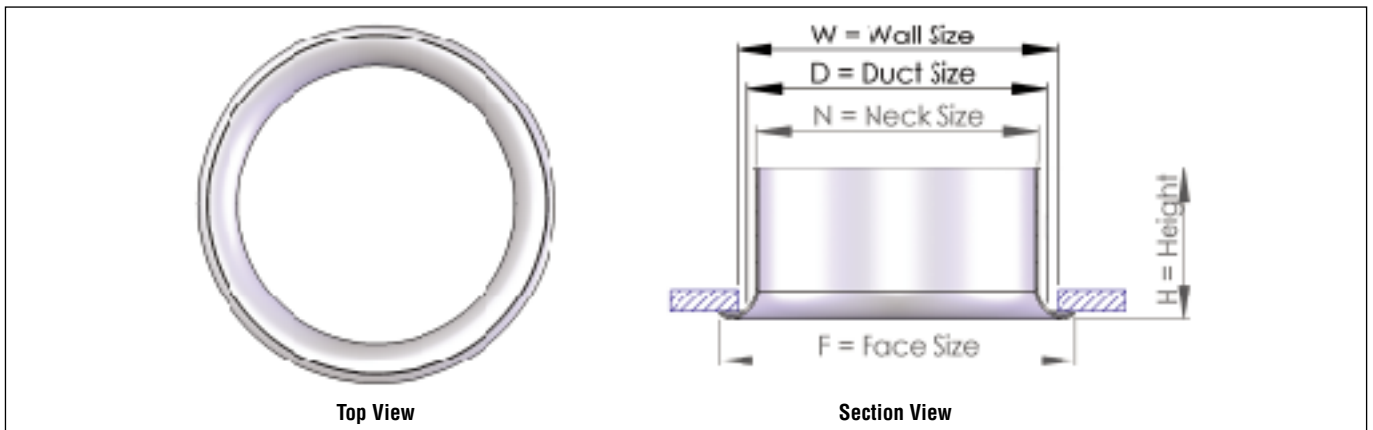
- Economical.
- Long throw capability.
- High air flow capability.
- Suitable for exposed ductwork or surface mounted.
- Suitable for ceiling or wall installation.

Standard Sizes

- 100ø, 150ø, 200ø, 250ø, 300ø, 350ø, 400ø (mm)



CF Construction Illustrations



CF Physical Dimension Unit:mm

N = Neck Size	D = Duct Size	W = Wall Size	F = Face Size	H = Height
100	106	120	160	70
150	158	170	225	95
200	205	220	275	115
250	255	265	320	140
300	308	325	370	155
350	360	375	420	170
400	410	450	480	195

CF Jet Diffuser

■ CF Air Flow Performance Data

Neck Size (mm)	Neck Area (m ²)	Nozzle Vel.(m/s)	2	3	4	5	6	7	8	10
		Tot. Press (mmAq)	0.5	1.1	1.4	2.2	2.9	4.4	5.3	8.2
100	0.0079	CMH	57	85	113	141	170	198	226	283
		Throw (m)	1.6	2.6	3.6	4.5	5.4	6.4	7.2	10
		NC	-	-	21	26	30	34	36	42
125	0.0177	CMH	127	191	254	318	382	445	509	636
		Throw (m)	2.6	4	5.5	6.8	8.2	9.6	11	15.2
		NC	-	-	22	27	31	34	37	43
160	0.0314	CMH	226	339	452	565	679	792	905	1131
		Throw (m)	3.8	5.6	7.4	9.2	11	13	14.7	20.5
		NC	-	-	24	28	32	35	39	45
200	0.0491	CMH	353	530	707	884	1060	1237	1414	1767
		Throw (m)	4.6	7	9.5	11.6	13.8	16.2	18.5	25.4
		NC	-	-	24	28	33	36	40	46
250	0.0707	CMH	509	763	1018	1272	1527	1781	2036	2545
		Throw (m)	5.6	8.4	11.2	14	16.8	19.5	22.2	31
		NC	-	-	24	29	33	36	40	46
300	0.0962	CMH	693	1039	1385	1732	2078	2425	2771	3464
		Throw (m)	6.5	9.6	13	16.3	19.5	22.6	25.6	35.5
		NC	-	-	24	29	33	37	41	47
400	0.1257	CMH	905	1357	1810	2262	2714	3167	3619	4524
		Throw (m)	7.4	10.8	15.2	18.8	22.4	26.4	29.4	33.1
		NC	-	-	25	31	34	37	42	49

- Throw is based on terminal velocity of 0.25m/s.
- Throw is based on isothermal condition.
- NC value is based on room absorption of 10dB, re 10⁻¹² watts.
- Dash (-) in space indicates NC value less than 20.
- The performance data is tested in axial installation (wall installation).

■ CF Suggested Specification

CF-A jet diffuser shall be made of 1.0mm thickness aluminum roll formed. The diffuser shall be epoxy coated and furnished to architectural requirement.

■ CF Order Code

Model	Material	Neck Size (mm)
CF	A (Aluminum)	100, 150, 200, 250, 300, 350

Example: CF-A-200mm