

DSA-T Acoustical Louver

Description

ASLI acoustical louvers, DSA-T are designed for intake and exhaust application where maximum noise reduction is required. The louver frames are 300mm depth and the blades of airfoil type are positioned at 45° angle.

Materials

- Frame: Galvanized Steel, 1.0mm thickness.
- Blade: Galvanized Steel, 1.0mm thickness.
- Acoustical Insulation: Fiberglass.

Surface Finish

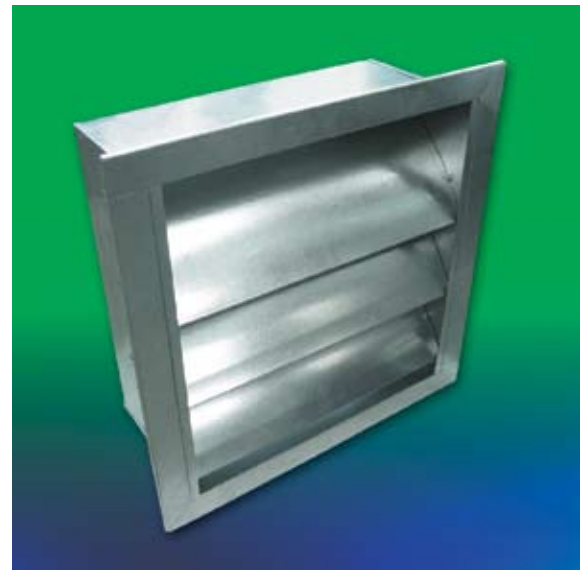
- White powder coated.

Screen

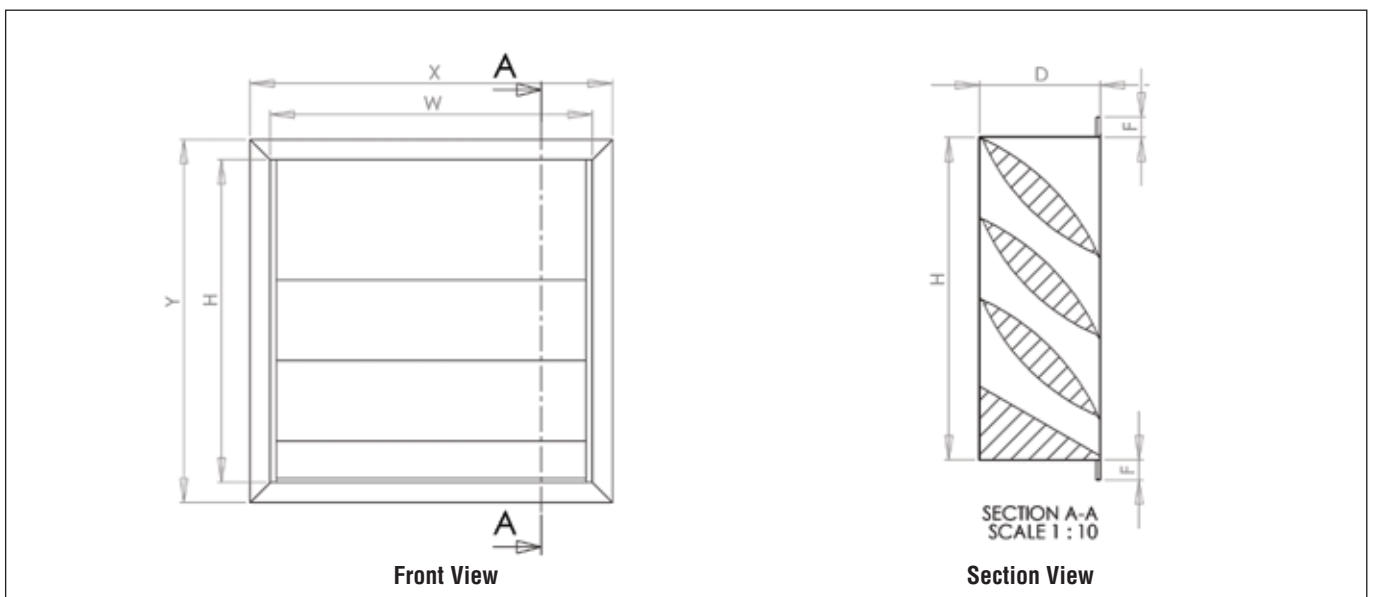
- Bird screen (optional).
- Insect screen (optional).

Features

- Approximately 28% free area.
- Low pressure drop.
- 42% free area on the perforated sheet.
- Airfoil blades positioned at 45° angle.
- Suitable for intake or exhaust air application.
- Architecturally pleasing appearance.



DSA-T Construction Illustrations

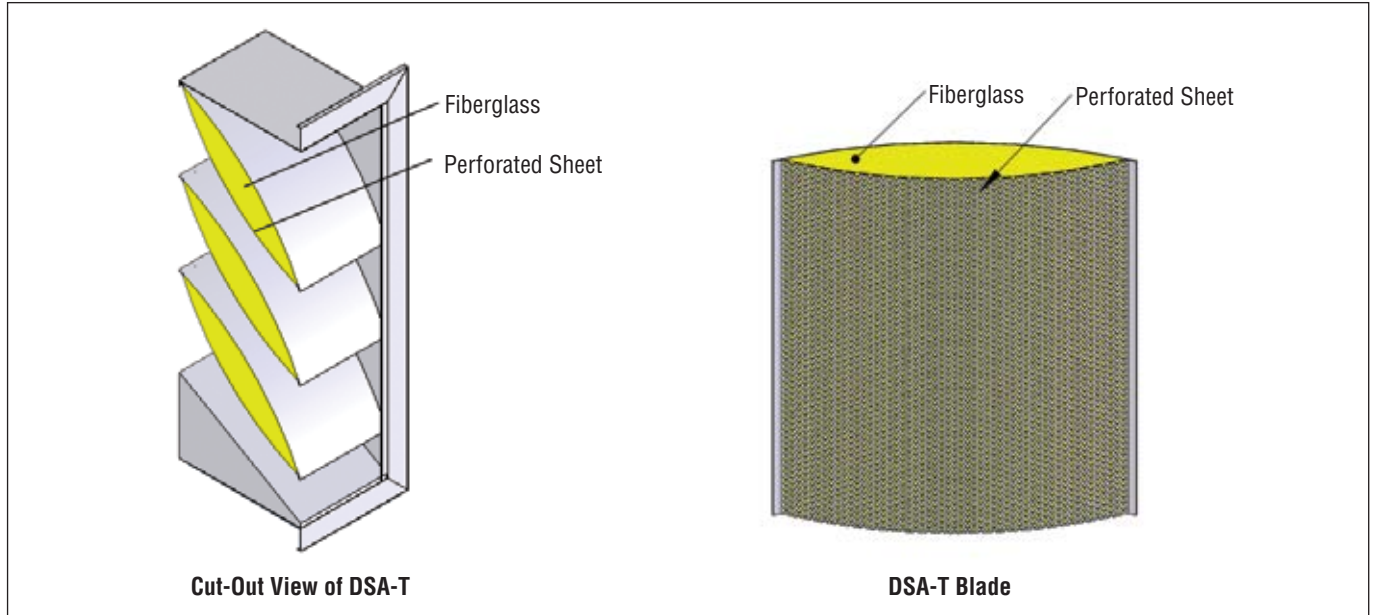


DSA -T Physical Dimension Unit:mm

W (Neck Size)	H (Neck Size)	X (Face Size)	Y (Face Size)	D (Depth)	F (Flange)
W	H	W + 100	H + 100	300	50

DSA-T Acoustical Louver

■ DSA-T Illustrations



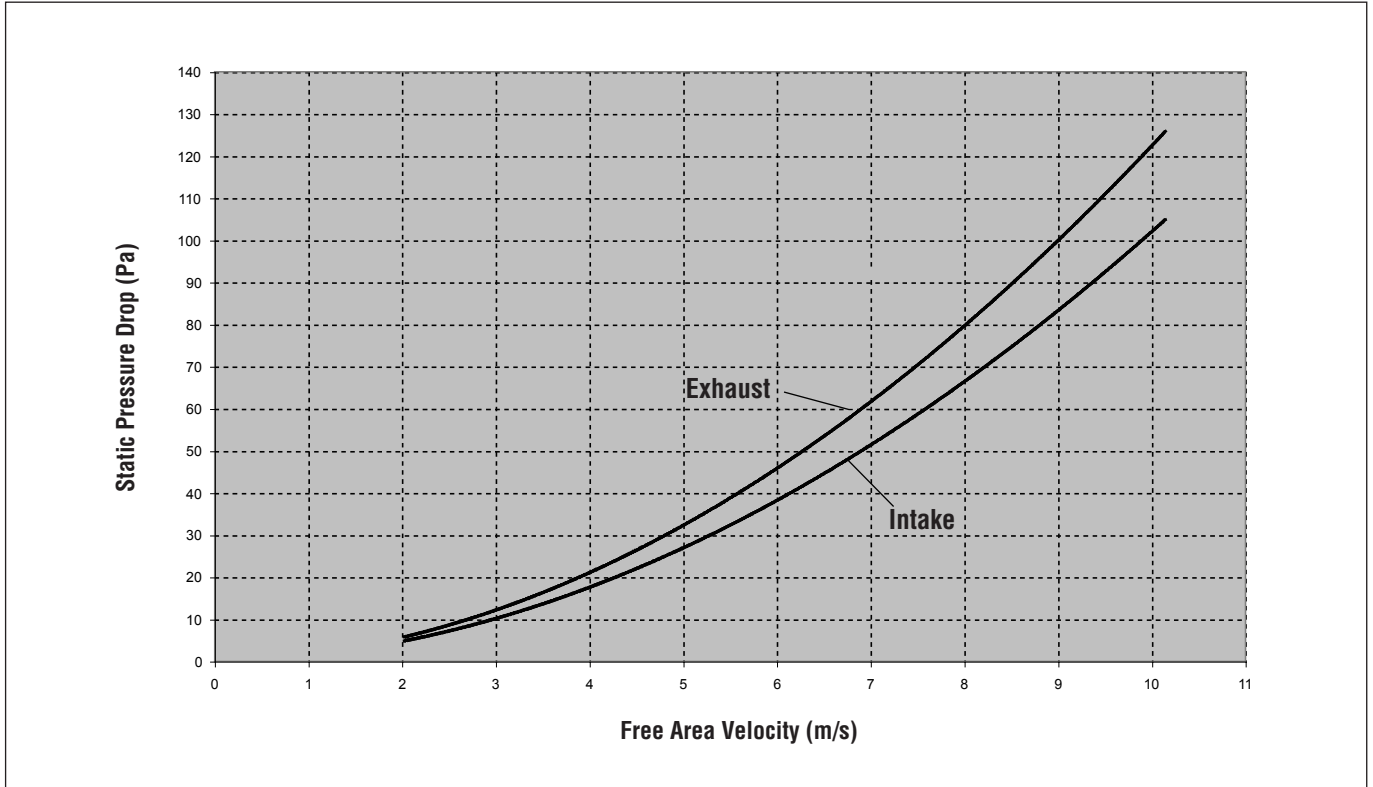
The airfoil blades are constructed with galvanized steel on exterior surface and perforated sheet on the interior surface that covers fiberglass. The noise transmitted through the louver will be absorbed by the fiberglass. Hence the noise will be greatly reduced.

■ DSA-T Performance Data

Octave Band/ Frequency (Hz)	Free Field Noise Reduction (dB)	Transmission Loss (dB)
1 / 63	13	7
2 / 125	13	7
3 / 250	14	8
4 / 500	17	11
5 / 1000	19	13
6 / 2000	18	12
7 / 4000	17	11
8 / 8000	18	12

DSA-T Acoustical Louver

■ DSA-T Air Flow Resistance



■ DSA-T Suggested Specification

The acoustical louver shall be of ASLI, model DSA-T, constructed of 1.0mm galvanized steel construction with a minimum 25% free area. The depth of the louver shall be 300mm (12 inch). The louver blades shall be airfoil type constructed with galvanized steel on exterior surface and perforated sheet on the interior surface that covers fiberglass. The perforated sheet on the blade shall have minimum 40% free area. The blades shall be positioned at 45° angle. The acoustical insulation material shall be fiberglass. The louver shall be powder coated and furnished to architectural requirement.

■ DSA-T Order Code

Model	Neck Size (W xH)
DSA-T	N600mm x 600mm

Example: DSA-T-N600mm x 600m